



# SOUTHWEST OILFIELD PRODUCTS, INC. MUD PUMP EXPENDABLE PARTS LIST

## SOUTHWEST 8482-25A FLUID END FOR LEWCO W-2200

®

### MUD PUMP PERFORMANCE CHART

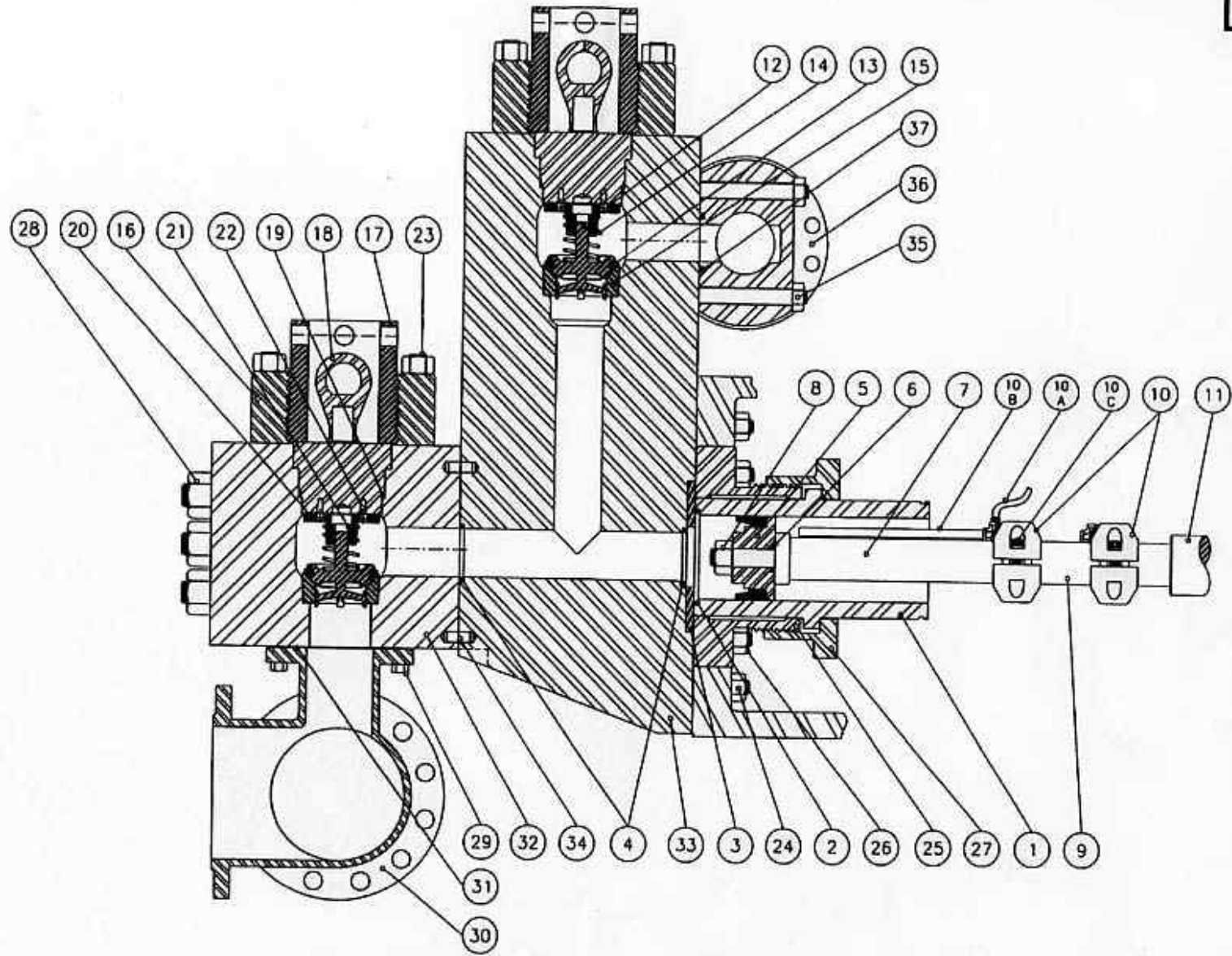
PUMP MODEL	MAX I.H.P.	MAX S.P.M.	STROKE LENGTH	LINER SIZE IN INCHES									
				5"	5 1/2"	6"	6 1/2"	7"	7 1/2"	8"			
W-2200	2200	105	14"	MAX-P.S.I.	7500	7475	6285	5360	4615	4025	3535		
				G.P.R.	3.57	4.32	5.14	6.03	7.00	8.03	9.14		
				G.P.R. @ 105 R.P.M.	375	454	540	635	735	843	960		

NOTE: I.H.P.= INPUT HORSE POWER    S.P.M.= STROKE PER MINUTE    P.S.I.= POUNDS PER SQUARE INCH    G.P.R.= GALLONS PER REVOLUTION

\*MAX – P.S.I. CALCULATIONS DO NOT EXCEED MAXIMUM FLUID END PRESSURE RATINGS

BASED ON 100% VOLUMETRIC EFFICIENCY AND 90% MECHANICAL EFFICIENCY

8482-25A



REV#	DATE	REVISED BY	REVISIONS	UNLESS OTHERWISE NOTED . . .	SOUTHWEST® OILFIELD PRODUCTS, INC. -- HOUSTON, TX.				
				1. ALL DIMENSIONS ARE IN INCHES. 2. ALL FRACTIONAL DIMENSIONS ARE $\pm 1/64$ . 3. ALL DECIMAL DIMENSIONS ARE $\pm .005/- .000$ . 4. ALL ANGLES ARE $\pm 0.5^\circ$ . 5. ALL FILLETS AND RADIUS ARE $1/16$ MAX. 6. BEVELS ARE $1/16 \times 45^\circ$ MAX. 7. SURFACE FINISH IS $125 \sqrt{RMS}$ MAX. 8. CONCENTRICITY NOT TO EXCEED $.005$ I.R. 9. BREAK CORNERS AT $1/32 \times 45^\circ$ MAX.	PROPRIETARY INFORMATION--THE INFORMATION CONTAINED HEREON SHALL BE CONSIDERED THE SOLE PROPERTY OF SOUTHWEST OILFIELD PRODUCTS, INC. AND THE RECIPIENT THEREOF AGREES TO MAINTAIN THE INFORMATION CONFIDENTIAL AND AGREES NOT TO COPY, REPRODUCE, ILLUSTRATE TO OTHERS, OR USE IN WHOLE OR IN PART FOR ANY PURPOSE WITHOUT THE EXPRESS WRITTEN PERMISSION OF SOUTHWEST OILFIELD PRODUCTS, INC.	DESCRIPTION <b>ASSEMBLY LAYOUT FOR 7500PSI</b>  <b>LEWCO W 2200</b>	DRAWN DATE 12-14-01 NAME J.A.H. HEAT TREATMENT N/A	APPROVED 01-02-02 T.LEMAN DRAWING # <b>8482-25A</b>	SCALE <b>NONE</b>  REVISION #
					FILE # H:\ASSEMBLY\8482-25A	MATERIAL N/A	N/A	8482-25A	

FLUID END TYPE	MODEL OF PUMP	SIZE OF PUMP
<b>SOUTHWEST 7500 P.S.I.</b>	<b>LEWCO W-2200</b>	<b>9" X 14"</b>

ITEM NO.	PART NO.	DESCRIPTION	QTY. REQ'D
	8482-25A	<b>FLUID END ASSEMBLY: (CONSISTS OF ITEMS: 3,4,16,17,18,19,20,21,22,23,24,25,26,27,28,29,32,33,34)</b>	
1	6382G-XX	<b>LINER REFER TO GUIDE FOR ORDERING CHART FOR TYPE (G); (Y); AND FOR BORE SIZE (XX)</b>	3
2	2930-XX	<b>LINER SEAL</b>	3
3	8482-5	<b>WEARPLATE</b>	3
4	2930-09	<b>WEARPLATE &amp; MODULE SEAL</b>	6
5	XX-BYY	<b>PISTON REFER TO GUIDE FOR ORDERING CHART FOR SIZE (XX) AND FOR TYPE (YY)</b>	3
6	568-225	<b>PISTON O-RING</b>	3
7		<b>PISTON ROD (WITH ELASTIC STOP NUT)</b>	3
8	API-4ESN	<b>PISTON ROD ELASTIC STOP NUT</b>	3
9		<b>SUB ROD</b>	3
10		<b>ROD CLAMP (CONSIST OF 10A, 10B, 10C)(FOR CLAMP ONLY, USE XXXXC)</b>	6
10A		<b>HOSE</b>	3
10B		<b>PIPE</b>	3
10C		<b>ROD CLAMP BOLT</b>	12
11		<b>PONY ROD</b>	3
12	SEE PAGE	<b>VALVE</b>	6
13	SEE PAGE	<b>VALVE INSERT (IF REQUIRED)</b>	6
14	SEE PAGE	<b>VALVE SPRING</b>	6
15	SEE PAGE	<b>VALVE SEAT</b>	6
	SWTM1700	<b>HYDRAULIC SEAT PULLER KIT COMPLETE (REFER TO TOOLS SECTION IN CATALOG)</b>	1
16	4476	<b>THREADED FLANGE</b>	6
17	4597	<b>SCREW GLAND</b>	6
18	4609-25	<b>PLUG (COMPLETE WITH VALVE GUIDE; BUSHING; AND SCREWS) INCLUDES ITEMS 20, 21, &amp; 22</b>	6
19	P119	<b>HP VALVE COVER PLUG SEAL (ALSO AVAILABLE IN URETHANE - PART# P119U)</b>	6
20	4776R	<b>VALVE GUIDE (COMPLETE WITH BUSHING #4700I)</b>	6
21	4700I	<b>VALVE GUIDE BUSHING (ALSO AVAILABLE IN URETHANE - PART# 4700IU)</b>	6
22	4016-98	<b>VALVE GUIDE SCREW</b>	12
23	4015-54	<b>VALVE COVER STUD (WITH SW PART# HHN1500-6 1 1/2-6 HEAVY HEX NUT)</b>	84
24	4019-24	<b>POWER END STUD (WITH SW PART# HHN1500-6 1 1/2-6 HEAVY HEX NUT)</b>	30



**SOUTHWEST 7500 PSI****LEWCO W-2200****GUIDE TO ORDERING**

PISTONS		LINERS			LINER GASKETS		
SIZE	FAIL-SAFE	DUAL-DURO®	BLACK CAT	GRAYLOY®	ZIRCONIA	RUBBER	URETHANE
5"	81BFS	81BDD	81BBC	6382G1	6382ZIR1	2930-1	2930-1U
5 1/4"	82BFS	82BDD	82BBC	6382G2		2930-2	2930-2U
5 1/2"	83BFS	83BDD	83BBC	6382G3	6382ZIR3	2930-3	2930-3U
5 3/4"	84BFS	84BDD	84BBC	6382G4		2930-4	2930-4U
6"	85BFS	85BDD	85BBC	6382G5	6382ZIR5	2930-5	2930-5U
6 1/4"	86BFS	86BDD	86BBC	6382G6		2930-6	2930-6U
6 1/2"	87BFS	87BDD	87BBC	6382G7	6382ZIR7	2930-7	2930-7U
6 3/4"	88BFS	88BDD	88BBC	6382G8		2930-8	2930-8U
7"	89BFS	89BDD	89BBC	6382G9	6382ZIR9	2930-9	2930-9U
7 1/4"	91BFS	91BDD	91BBC	6382G10		2930-10	2930-10U
7 1/2"	92BFS	92BDD	92BBC	6382G11		2930-11	2930-11U
7 3/4"				6382G12		2930-12	2930-12U
8"	94BFS	94BDD	94BBC	6382G13	6382ZIR13	2930-13	2930-13U

**NOTE: DUAL-DURO® AND GRAYLOY® ARE REGISTERED TRADEMARKS OF SOUTHWEST® OILFIELD PRODUCTS.**

## VALVES & SEATS (LEWCO W-2200)

TYPE	VALVE	INSERT	SPRING	STAINLESS SPRING	SEAT	PULLER HEAD	PULLER HEAD STYLE
SOUTHWEST (Full Open)	777-8B	N/A	941	N/A	877-8	SWTM4250	SPLIT JAW
FULL OPEN-ROUGHNECK (BONDED VALVE INSERT)	SWND-7V2	N/A	SW5710-115L	N/A	SWND-7S12	SWTM40-SN SWND-7PH	SPLIT JAW PANCAKE
FULL OPEN-ROUGHNECK (High Temp)	SWND-7V2HC	N/A	SW5710-115L	N/A	SWND-7S12	SWTM40-SN SWND-7PH	SPLIT JAW PANCAKE
FULL OPEN-ROUGHNECK (w/Replaceable Urethane Insert)	SWND-7V1	SWND-7I	SW5710-115L	N/A	SWND-7S12	SWTM40-SN SWND-7PH	SPLIT JAW PANCAKE
3 WEB DOUBLE ANGLE O-RING	SWR0500110	SWR0514275	SWR0513744	SWR0514790	SWR0514299	SWTM3-7T	3 J HOOK
3 WEB (High Temp)	SWR0520502	SWR0520501	SWR0513744	SWR0514790	SWR0514299	SWTM3-7T	
3 WEB STANDARD PLATE	SWR0505062	SWR0504893	SWR0513937	SWR0511423	SWR0514299	SWTM3-7T	
4 WEB	SWU5C-EEF	SWUDD-7B	SW5710-115	N/A	SW7DD-B12	SWTM4-7	4 J HOOK
4 WEB (High Temp)	SWU5C-EEFHT	SWUDD-7BHT	SW5710-115	N/A	SW7DD-B12	SWTM4-7	

PANCAKE



SPLIT JAW



3 J HOOK



4 J HOOK



**TORQUE SPECIFICATIONS FOR 8482-25A SOUTHWEST FLUID END ASSEMBLY  
FOR LEWCO W-2200 7500 P.S.I.**

<u>PART NUMBER</u>	<u>DESCRIPTION</u>	<b>TORQUE TYPE (EXPRESSED IN FOOT-POUNDS)</b>		
		<u>COPPERCOTE</u>	<u>MOLY GREASE</u>	<u>DRY (NOT RECOMMENDED)</u>
API-4 ESN	PISTON ROD NUT ROD CLAMP BOLT	NO MORE FORCE THAN ONE MAN ON 3' WRENCH/CHEATER COMBINATION 150 MAXIMUM		
4016-98	VALVE GUIDE SCREW	53	80	107
4015-54	VALVE COVER STUD	1208	1752	2417
4019-24	POWER END STUD	1150	1668	2301
4015-52	LINER RETAINER STUD	669	970	1338
4020-6	SUCTION MODULE STUD	3463	5021	6925
4018-19	SUCTION MANIFOLD CAP SCREW	215	322	430
4019-60	DISCHARGE SPACER FLANGE SOCKET HEAD CAP SCREW	757	1098	1514