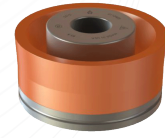


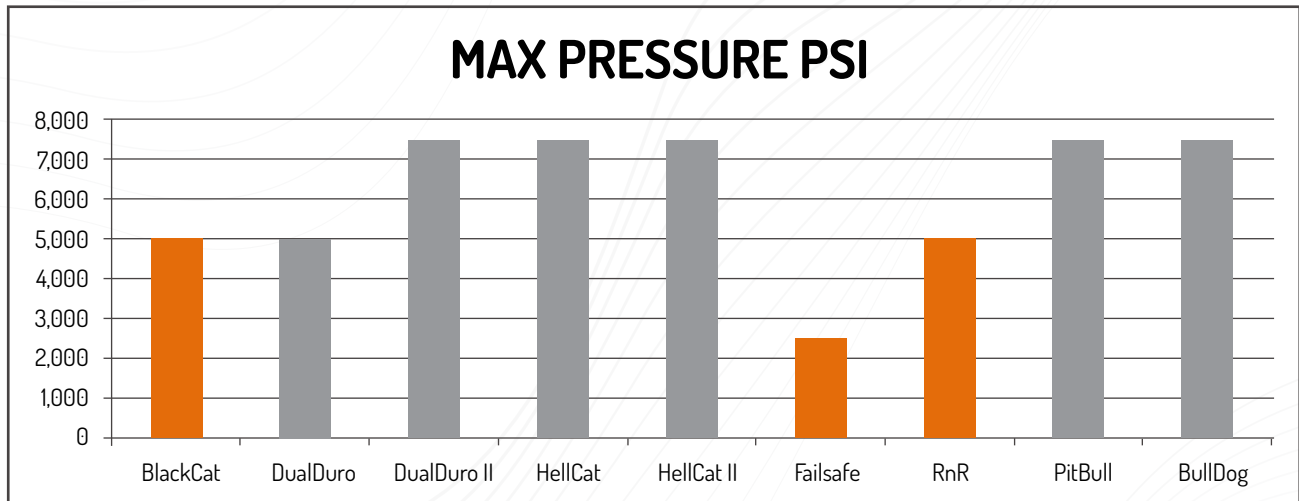
BELOW ARE LISTED THE IDEAL RUNNING ENVIRONMENT FOR SOUTHWEST PISTONS.



Piston Name	Material	Mud Type	Max Temp	Max Press
BlackCat	HNBR	WBM	250°F	5,000 PSI
DualDuro	PU/DD	OBM	170°F	5,000 PSI
HellCat	PU/SD	OBM	300°F	7,500 PSI
Failsafe	Nitrile	WBM	225°F	2,500 PSI
RnR	Nitrile	WBM	225°F	5,000 PSI
BullDog	PU/SD	OBM	300°F	7,500 PSI

ORANGE = WATER BASED MUD (WBM)

GREY = OIL BASED MUD (OBM)



ORANGE = WATER BASED MUD (WBM)

GREY = OIL BASED MUD (OBM)

